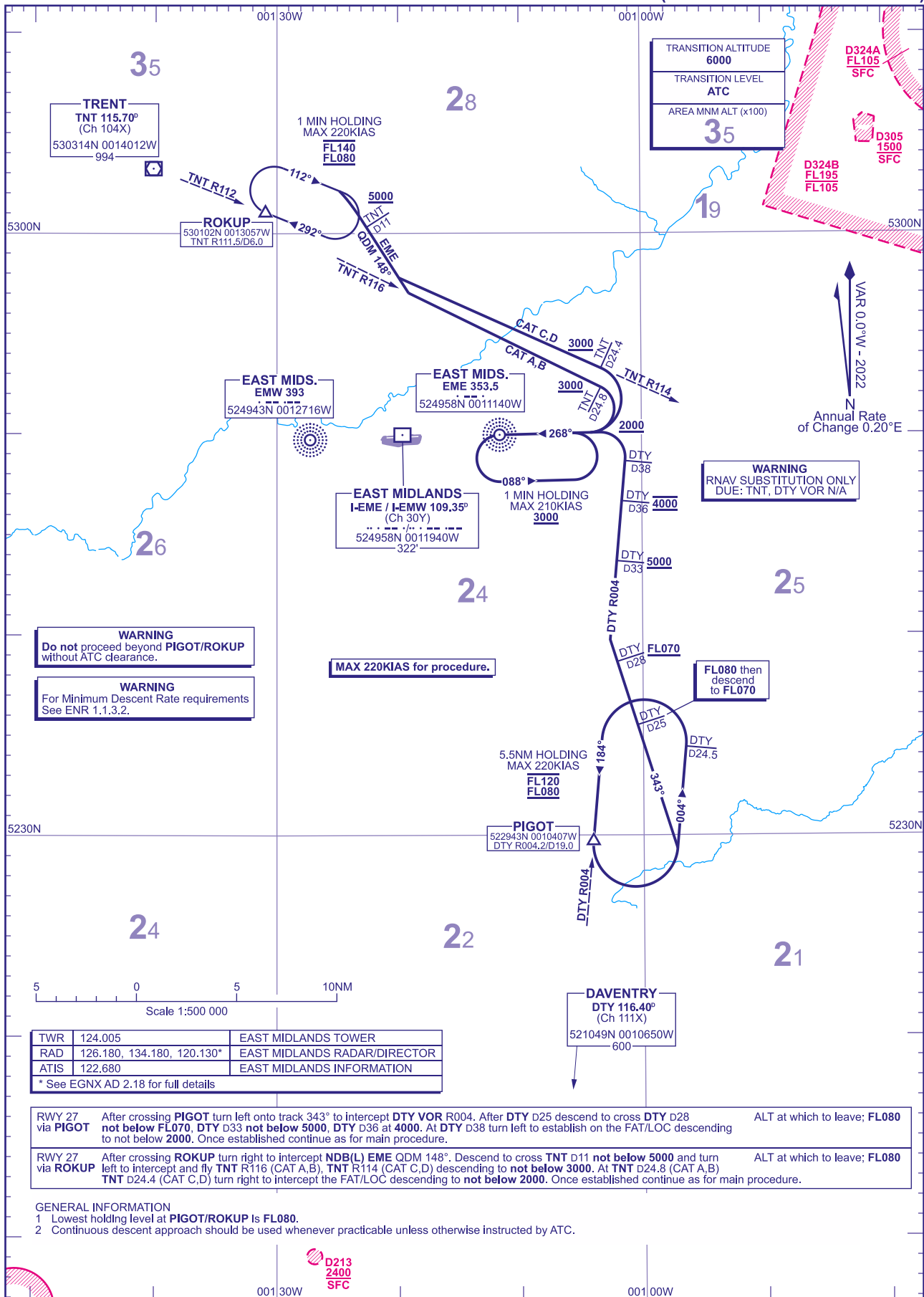


INITIAL APPROACH PROCEDURES  
ILS/DME RWY 27

DISTANCES IN NAUTICAL MILES  
TRACKS ARE MAGNETIC  
ALTITUDES AND ELEVATIONS ARE IN FEET

EAST MIDLANDS  
via PIGOT/ROKUP  
(RNAV SUBSTITUTION ONLY)



**WARNING**  
Do not proceed beyond PIGOT/ROKUP  
without ATC clearance.

**WARNING**  
For Minimum Descent Rate requirements  
See ENR 1.1.3.2.

MAX 220KIAS for procedure.

**WARNING**  
RNAV SUBSTITUTION ONLY  
DUE: TNT, DTY VOR N/A

FL080 then  
descend to  
FL070

TWR	124.005	EAST MIDLANDS TOWER
RAD	126.180, 134.180, 120.130*	EAST MIDLANDS RADAR/DIRECTOR
ATIS	122.680	EAST MIDLANDS INFORMATION

\* See EGNX AD 2.18 for full details

**RWY 27 via PIGOT** After crossing PIGOT turn left onto track 343° to intercept DTY VOR R004. After DTY D25 descend to cross DTY D28 ALT at which to leave; FL080 not below FL070. DTY D33 not below 5000, DTY D36 at 4000. At DTY D38 turn left to establish on the FAT/LOC descending to not below 2000. Once established continue as for main procedure.

**RWY 27 via ROKUP** After crossing ROKUP turn right to intercept NDB(L) EME QDM 148°. Descend to cross TNT D11 not below 5000 and turn ALT at which to leave; FL080 left to intercept and fly TNT R116 (CAT A,B), TNT R114 (CAT C,D) descending to not below 3000. At TNT D24.8 (CAT A,B) TNT D24.4 (CAT C,D) turn right to intercept the FAT/LOC descending to not below 2000. Once established continue as for main procedure.

- GENERAL INFORMATION
- 1 Lowest holding level at PIGOT/ROKUP is FL080.
  - 2 Continuous descent approach should be used whenever practicable unless otherwise instructed by ATC.